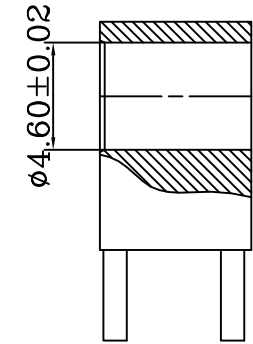
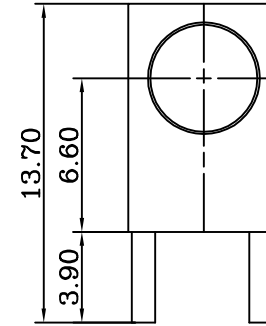
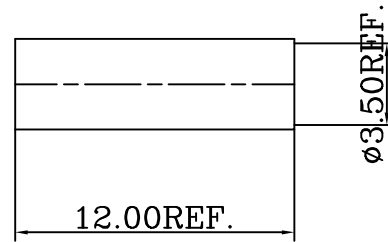
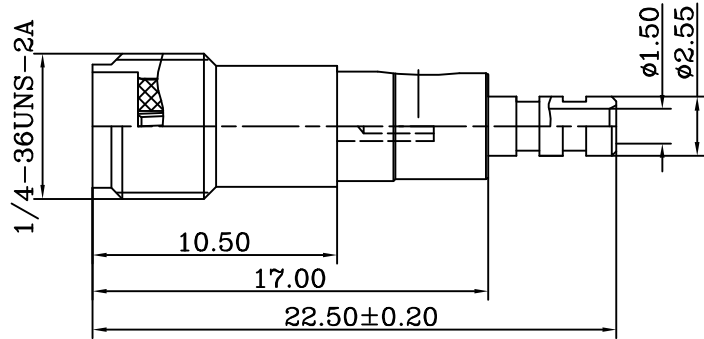


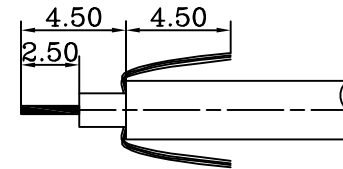
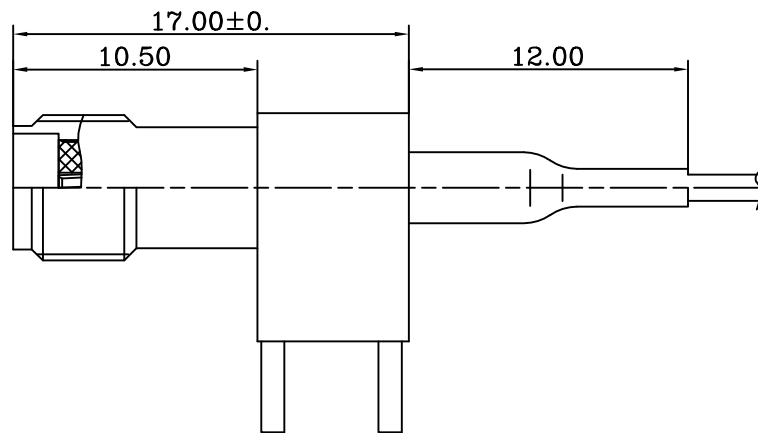
ROHS Compliant

1. CRIMPED REAR BODY HEX CRIMP SIZE .078"
2. CONTACT PIN TO SOLDER

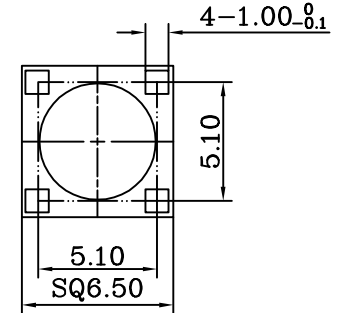
REVISIONS				
RevNo	Description	Date	Revision	Mender
1				
2				



AFTER ASSEMBLE:



RECOMMENDED
CABLE STRIPPING DIM'S



ITEM	DESCRIPTION	MATERIAL	Q'TY	FINISHED
5	HOUSING	BRASS	1	GOLD PLATED
4	HEAT SHRINK TUBE	----	1	BLACK
3	CONTACT PIN	Be,Cu	1	GOLD PLATED
2	INSULATOR	TEFLON	1	WHITE
1	SMA BODY	BRASS	1	GOLD PLATED



YIN SHENG TECHNOLOGY CO.,LTD.

TITLE
R/A SMA FEMALE TO PCB CRIMP FOR 1.13 CABLE, 50 OHM

DRAWING NO.	成品图	UNITS	MM	DESIGNED	NQ
1120-0331A-215 <td></td> <td>SCALE</td> <td>FIT</td> <td>DRAWING</td> <td>NQ</td>		SCALE	FIT	DRAWING	NQ
MODEL NO.	SSA0023/1.13			CHECKED	David
PART NO.		EDITION	A1	APPROVED	Andy
CAD FILE	Yin sheng/Yifaxing/SMA/xxxxx			PUBLISH DATE	2012/02/16

UNLESS OTHERWISE SPECIFIED
TOLERANCES:
0.5-15 = ±0.15
15-30 = ±0.30
30-120 = ±0.60
>120 = ±1.00
ANGLES
±5°

3RD ANGLE